

HA-Tag Mouse Monoclonal Antibody(1B10)

Catalog	PMK003M	PMK003S
Quantity	50 μ L	100 μ L

Tel : 400-457-3801

E-mail: postmaster@biopmk.com

Web: www.biopmk.com

For research use only.

Applications	Species Cross-Reactivity	Molecular Weight	Isotype
WB, IP, IF	N/A	N/A	IgG1

Storage Buffer & Condition: PBS, pH 7.4, containing 0.02% sodium azide as Preservative and 50% Glycerol. Store at -20°C. Do not aliquot the antibody.

Recommended dilutions: WB: 1:5,000 IP: 1:200 IF: 1:1000

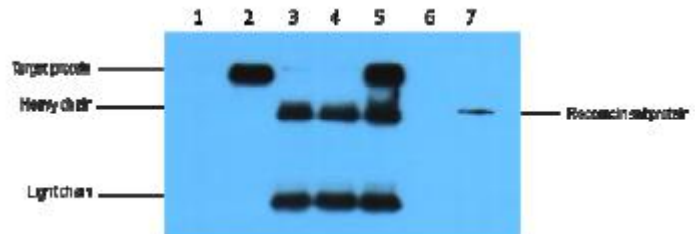
Optimal dilutions should be determined by the end user.

Specificity: The HA tag antibody can recognize C-terminal, internal, and N-terminal HA-tag fusion proteins.

Background: Human influenza hemagglutinin (HA) is a surface glycoprotein required for the infectivity of the human virus. The HA tag is derived from the HA-molecule corresponding to amino acids 98-106 has been extensively used as a general epitope tag in expression vectors. Many recombinant proteins have been engineered to express the HA tag, which does not appear to interfere with the bioactivity or the biodistribution of the recombinant protein. HA tag antibody is a highly sensitive and affinity monoclonal antibody applicable to HA-tagged fusion protein detection.

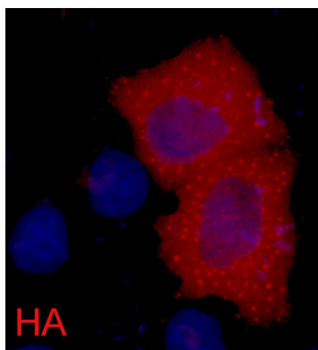


0.5 μ g HA fusion protein+ Primary antibody dilution at 1:10,000



IP antibody use 5 μ g HA Mouse IgG1 per ml Lysate WB 1:5000

- 1 untransfected 293 cell lysate
- 2 transfected 293 cell lysate with HA-tag fusion protein
- 3 IP(untransfected 293+anti-HA mAb+Protein G agarose)
- 4 IP (transfected 293+ normal Mouse IgG+Protein G agarose)
- 5 IP (transfected 293+anti-HA mAb+ Protein G agarose)
- 6 IP (transfected 293+Protein G)
- 7 Recombinant protein (E.coli)



IF analysis of 293 cells transfected with a HA-tag protein, using PMKbio anti-HATag Mouse mAb at a 1:2000 dilution (blue DAPI, red anti-HA)

Application: WB-Western blot IHC-Immunocytochemistry IF-Immunofluorescence IP-Immunoprecipitation ChIP-Chromatin Immunoprecipitation

Reactivity: H-Human R-Rat M-Mouse Mk-Monkey Dg-Dog Ch-Chicken Hm-Hamster Rb-Rabbit Sh-Sheep Pg-Pig