

## GST-Tag Mouse Monoclonal Antibody(1B10)

Catalog	PMK007M	PMK007S	Tel : Tel :400-457-3801
Quantity	50 $\mu$ L	100 $\mu$ L	E-mail: <a href="mailto:postmaster@biopmk.com">postmaster@biopmk.com</a>
			Web: <a href="http://www.biopmk.com">www.biopmk.com</a>

**For research use only.**

Applications	Species Cross-Reactivity	Molecular Weight	Isotype
WB/IP	N/A	N/A	IgG

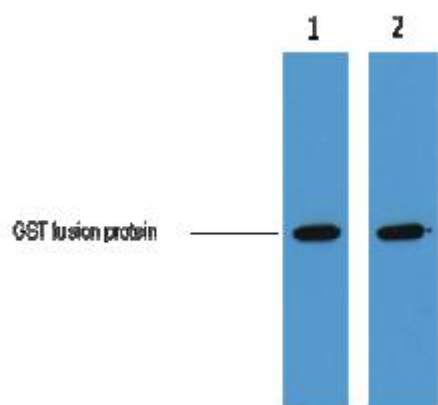
**Storage Buffer & Condition:** PBS, pH 7.4, containing 0.02% sodium azide as Preservative and 50% Glycerol.  
 Store at -20°C. Do not aliquot the antibody.

**Recommended dilutions:** WB: 1:5,000 IP:1:200

**Optimal dilutions should be determined by the end user.**

**Specificity:** The GST tag antibody can recognize C-terminal, internal, and N-terminal GST fusion proteins.

**Background:** The glutathione S-transferase (GST, previously known as ligandins) family of enzymes are composed of many cytosolic, mitochondrial, and microsomal proteins. GSTs are present in eukaryotes and in prokaryotes, where they catalyze a variety of reactions and accept endogenous and xenobiotic substrates. GST tag antibody can be helpful in detecting the fusion protein during purification as well as the cleavage of GST from the protein of interest. GST tag antibody has wide applications that could include your research on GST proteins or GST fusion recombinant proteins.



0.5 $\mu$ g GST fusion protein+ Primary antibody dilution at

1、 1:5,000

2、 1:10,000

**Application:** WB-Western blot IHC-Immunochemistry IF-Immunofluorescence IP-Immunoprecipitation ChIP-Chormatin Immunoprecipitation

**Reactivity:** H-Human R-Rat M-Mouse Mk-Monkey Dg-Dog Ch-Chicken Hm-Hamster Rb-Rabbit Sh-Sheep Pg-Pig