



Lamin B1 Rabbit Polyclonal Antibody

Catalog	PMK050M	PMK050S
Quantity	50 μ L	100 μ L

Tel : 400-457-3801

E-mail: postmaster@biopmk.com

Web:www.biopmk.com

For research use only.

Applications	Species	Cross-Reactivity	Molecular Weight	Isotype
WB, IHC		H, R, M	68KD(45K D)	IgG

Storage Buffer & Condition: PBS, pH 7.4, containing 0.02% sodium azide as Preservative and 50% Glycerol.
Store at -20 °C. Do not aliquot the antibody.

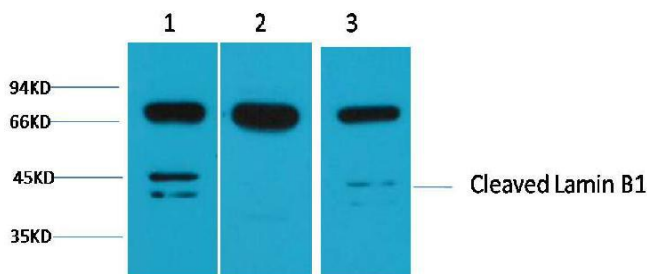
Recommended dilutions: WB: 1:1,000-3,000 IHC: 1:500-1,000

Optimal dilutions should be determined by the end user.

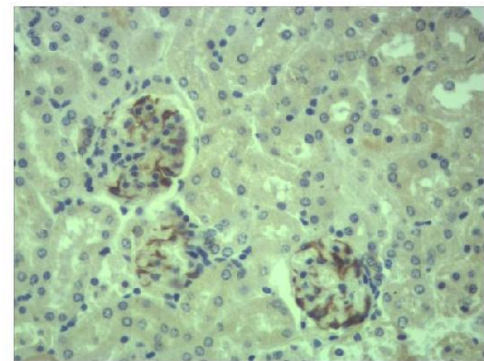
Specificity: The Lamin B1 antibody can detect endogenous Lamin B1 protein.

Alternative Names: ADLD, LMB1, LMNB1, MGC111419, OTTHUMP00000159218

Background: The nuclear lamina consists of a two-dimensional matrix of proteins located next to the inner nuclear membrane. The lamin family of proteins make up the matrix and are highly conserved in evolution. During mitosis, the lamina matrix is reversibly disassembled as the lamin proteins are phosphorylated. Lamin proteins are thought to be involved in nuclear stability, chromatin structure and gene expression. Vertebrate lamins consist of two types, A and B. This gene encodes one of the two B type proteins, B1.



Western blot analysis of 1) 293T, 2) Mouse Brain, 3) Rat Brain tissue with Pmk050 diluted at 1:2,000.



Immunohistochemical analysis of paraffin-embedded Mouse Kidney Tissue using Lamin B1 pmk050 Rabbit pAb diluted at 1:500.