



β-Tubulin Mouse Monoclonal Antibody-HRP conjugated

Catalog	PMK059M	PMK059S	Tel : 400-457-3801
Quantity	50μL	100μL	E-mail:postmaster@biopmk.com
			Web:www.biopmk.com

For research use only.

Applications	Species Cross-Reactivity	Molecular Weight	Isotype
WB, IHC	H, R, M, Mk, Dg, Ch, Hm, Rb, Pg, Sh	55KD	IgG1

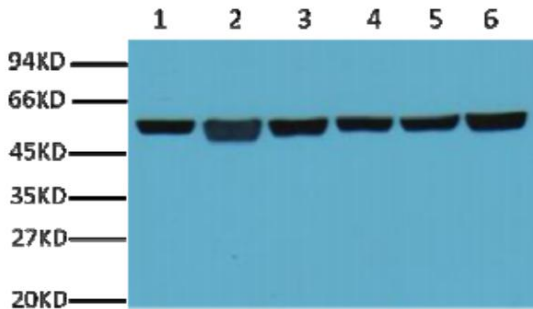
Storage Buffer & Condition: PBS, pH 7.4, containing 0.02% Kathon as Preservative and 50% Glycerol.
 Store at -20°C. Do not aliquot the antibody.

Recommended dilutions: WB: 1:5000 IHC: 1:100-500

Optimal dilutions should be determined by the end user.

Specificity:Antibody can detects endogenous β-tubulin protein

Background:Microtubules are constituent parts of the mitotic apparatus, cilia, flagella, and elements of the cytoskeleton. They consist principally of 2 soluble proteins, alpha- and beta-tubulin, each of about 55,000 Da. Antibodies against beta Tubulin are useful as loading controls for Western Blotting. However it should be noted that levels of β-Tubulin may not be stable in certain cells. For example, expression of β-Tubulin in adipose tissue is very low and therefore β-Tubulin should not be used as loading control for these tissues.



Western blot analysis of A549 (1) , Rat brain (2) ,Mouse brain (3) ,Chicken lung (4) and Rabbit testis (5),Sheep muscle (6) with β-tubulin mouse mAb-HRP diluted at 1:5000.

Application: WB-Western blot IHC-Immunochemistry IF-Immunofluorescence IP-Immunoprecipitation CHIP-Chormatin Immunoprecipitation
Reactivity: H-Human R-Rat M-Mouse Mk-Monkey Dg-Dog Ch-Chicken Hm-Hamster Rb-Rabbit Sh-Sheep Pg-Pig