

## Plant-actin Rabbit Polyclonal Antibody-HRP Conjugated

Catalog	PMK060M	PMK060S	Tel :400-457-3801
Quantity	50µL	100µL	E-mail: postmaster@biopmk.com
			Web: www.biopmk.com

**For research use only.**

Applications	Species Cross-Reactivity	Molecular Weight	Isotype
WB	Various Plants	43KD	IgG

**Storage Buffer & Condition:** PBS, pH 7.4, 50% Glycerol. Avoid SODIUM AZIDE.  
 Store at -20°C. Do not aliquot the antibody.

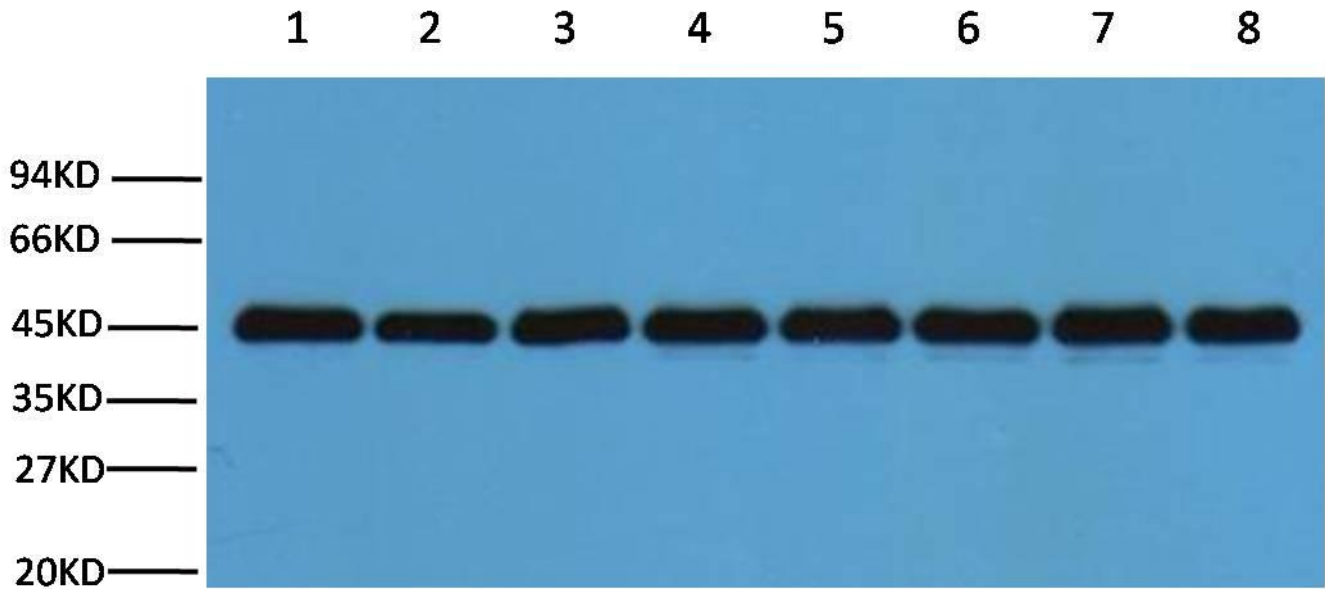
**Recommended dilutions:** WB: 1:2,000

**Optimal dilutions should be determined by the end user.**

**Specificity:** Antibody can detects endogenous plant-actin protein.

**Background: Reactivity:** Arabidopsis, Nicotiana tabacum, Oryza sativa, Hordeum vulgare

**Predicted to work with:** Brassica napus, Gossypium herbaceum, Solanum tuberosum, Setaria italic, Triticum monococcum, Brachypodium distachyon, Chrysanthemum seticuspe, Glycine max, Mangifera, Thellungiella halophila, Zoysia japonica, Isatis tinctoria.



Western blot analysis of Nicotiana tabacum leaf (1), Nicotiana tabacum root(2), Nicotiana seed (3), Oryza sativa flower(4) , Oryza sativa seed(5), Oryza sativa leaf(6), Hordeum vulgare seed (7), Hordeum vulgare leaves(8) with PMK060 diluted at 1:3000.

**Application:** WB-Western blot IHC-Immunochemistry IF-Immunofluorescence IP-Immunoprecipitation ChIP-Chormatin Immunoprecipitation

**Reactivity:** H-Human R-Rat M-Mouse Mk-Monkey Dg-Dog Ch-Chicken Hm-Hamster Rb-Rabbit Sh-Sheep Pg-Pig Z-Zebrafish