



β-actin Rabbit Polyclonal Antibody

Catalog PMK082M PMK082S

Tel : 400-457-3801

Quantity 50μL 100μL

E-mail: postmaster@biopmk.com

Web:www.biopmk.com

For research use only.

Applications	Species Cross-Reactivity	Molecular Weight	Isotype
WB, IHC, IF	H, R, M, Mk, Ch, Hm, Sh, Xenopus	43KD	IgG

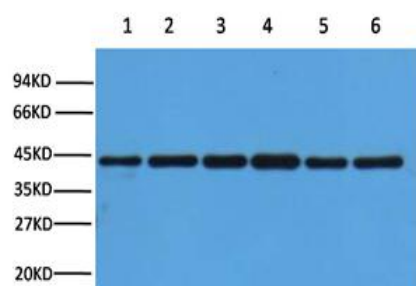
Storage Buffer & Condition: PBS, pH 7.4, containing 0.02% sodium azide as Preservative and 50% Glycerol. Store at -20°C. Do not aliquot the antibody.

Recommended dilutions: WB: 1:3,000 IHC: 1:200 IF: 1:200

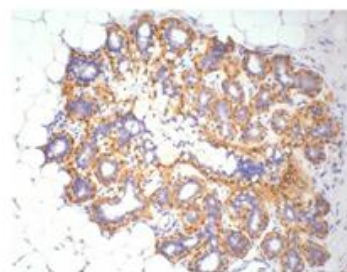
Optimal dilutions should be determined by the end user.

Specificity: Antibody can detect endogenous β-actin protein.

Background: β-Actin is one of six different actin isoforms that have been identified. The actin molecules found in cells of various species and tissues tend to be very similar in their immunological and physical properties. Therefore, Antibodies against β-Actin are useful as loading controls for Western Blotting. However it should be noted that levels of β-Actin may not be stable in certain cells. For example, expression of β-Actin in adipose tissue is very low and therefore β-Actin should not be used as loading control for these tissues.



Western blot analysis of HepG2 (1), Rat liver (2), Mouse kidney (3), Rabbit testis (4), Sheep lung (5), 293T (6) with β-Actin rabbit polyclonal antibody diluted at 1:5000.



IHC staining of Human ovary tissue with β-Actin pAb diluted at 1:200.

Applications: WB-Western blot IHC-Immunocytochemistry

IF-Immunofluorescence IP-Immunoprecipitation

ChIP-Chromatin Immunoprecipitation

Reactivity: H-Human R-Rat M-Mouse Mk-Monkey Dg-Dog

Ch-Chicken Hm-Hamster Rb-Rabbit Sh-Sheep

Pg-Pig