

Plant-actin Mouse Monoclonal Antibody(2E3)

Catalog	PMK085M	PMK085S	Tel :400-457-3801
Quantity	50µL	100µL	E-mail: postmaster@biopmk.com
			Web: www.biopmk.com

For research use only.

Applications	Species Cross-Reactivity	Molecular Weight	Isotype
WB	Various Plants	43KD	IgG1

Storage Buffer & Condition: PBS, pH 7.4, containing 0.02% sodium azide as Preservative and 50% Glycerol. Store at -20°C. Do not aliquot the antibody.

Recommended dilutions: WB: 1:5,000

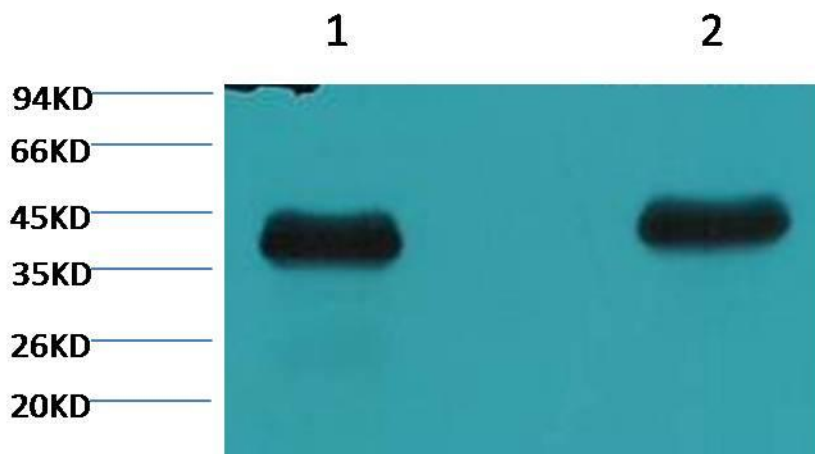
Optimal dilutions should be determined by the end user.

Specificity: Antibody can detects endogenous various plants protein.

Background: Actin is a highly conserved protein and an essential component of cell cytoskeleton and plays an important role in cytoplasmic streaming, cell shape determination, cell division, organelle movement and extension growth. Preferentially expressed in young and expanding tissues, floral organ primordia, developing seeds and emerging inflorescence. Antibodies against plant Actin are useful as loading controls for Western Blotting.

Reactivity: Arabidopsis, Nicotiana tabacum, Oryza sativa, Hordeum vulgare

Predicted to work with: Brassica napus, Gossypium herbaceum, Solanum tuberosum, Setaria italic, Triticum monococcum, Brachypodium distachyon, Chrysanthemum seticuspe, Glycine max, Mangifera, Thellungiella halophila, Zoysia japonica, Isatis tinctoria.



Western blot analysis of Arabidopsis with PMK085 diluted at

- 1 1:5,000
- 2 1:10,000

Application: WB-Western blot IHC-Immunochemistry IF-Immunofluorescence IP-Immunoprecipitation ChIP-Chormatin Immunoprecipitation

Reactivity: H-Human R-Rat M-Mouse Mk-Monkey Dg-Dog Ch-Chicken Hm-Hamster Rb-Rabbit Sh-Sheep Pg-Pig Z-Zebrafish