



β-tubulin Rabbit Polyclonal Antibody(5G3)

Catalog PMK088M PMK088S

Tel : 400-457-3801

Quantity 50μL 100μL

E-mail:postmaster@biopmk.com

Web:www.biopmk.com

For research use only.

Applications	Species Cross-Reactivity	Molecular Weight	Isotype
WB, IHC	H, R, M, Mk, Dg, C, Hm, Rb, Sh	55KD	IgG1

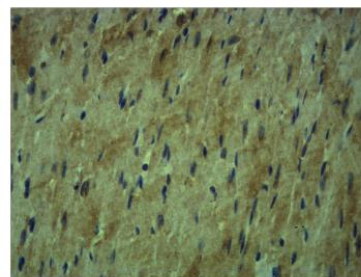
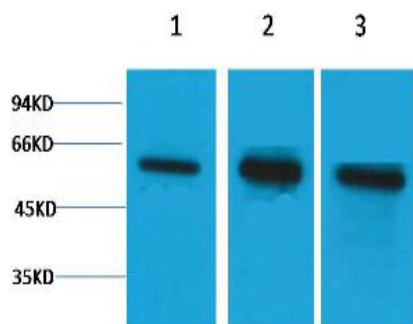
Storage Buffer & Condition: PBS, pH 7.4, containing 0.02% sodium azide as Preservative and 50% Glycerol.
 Store at -20°C. Do not aliquot the antibody.

Recommended dilutions: WB: 1:2000-5,000 IHC: 1:200

Optimal dilutions should be determined by the end user.

Specificity: The β- tubulin Rabbit Polyclonal Antibody can detects endogenous β- tubulin protein.

Background:Microtubules are constituent parts of the mitotic apparatus, cilia, flagella, and elements of the cytoskeleton. They consist principally of 2 soluble proteins, alpha- and beta-tubulin, each of about 55,000 Da. Antibodies against beta Tubulin are useful as loading controls for Western Blotting. However it should be noted that levels of β-Tubulin may not be stable in certain cells. For example, expression of β-Tubulin in adipose tissue is very low and therefore β-Tubulin should not be used as loading control for these tissues.



Western blot analysis of 1) Hela, 2) Mouse Brain, 3) Rat Brain tissue with PMK088 diluted at 1:5,000.

Immunohistochemical analysis of paraffin-embedded Mouse Heart Tissue using β-tubulin(PMK088) Rabbit pAb diluted at 1:500

Applications: WB-Western blot IHC-Immunocytochemistry IF-Immunofluorescence IP-Immunoprecipitation ChIP-Chromatin Immunoprecipitation
 H-Human R-Rat M-Mouse Mk-Monkey Dg-Dog Ch-Chicken Hm-Hamster Rb-Rabbit Sh-Sheep
Reactivity: Dog Pg-Pig