

Flag-Tag Rabbit Polyclonal Antibody

Catalog PMK101M PMK101S

Tel :400-457-3801

Quantity 50 μ L 100 μ L

E-mail: postmaster@biopmk.com

Web: www.biopmk.com

For research use only.

Applications	Species Cross-Reactivity	Molecular Weight	Isotype
WB	N/A	N/A	IgG

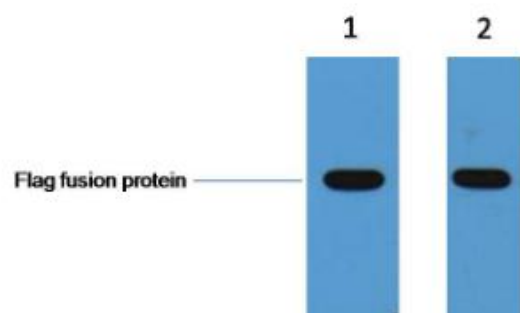
Storage Buffer & Condition: PBS, pH 7.4, containing 0.02% sodium azide as Preservative and 50% Glycerol. Store at -20°C. Do not aliquot the antibody.

Recommended dilutions: WB: 1:5,000

Optimal dilutions should be determined by the end user.

Specificity: The Flag tag antibody can recognize C-terminal, internal, and N-terminal Flag-tag fusion proteins.

Background: The DYKDDDDK peptide (Flag-tag) is a small component of an epitope which does not appear to interfere with the bioactivity or the biodistribution of the recombinant protein. It has been used extensively as a general epitope tag in expression vectors. It can be used for affinity chromatography, then used to separate recombinant, overexpressed protein from wild-type protein expressed by the host organism. It can also be used in the isolation of protein complexes with multiple subunits. A Flag-tag can be used in many different assays that require recognition by an antibody. If there is no antibody against the studied protein, adding a Flag-tag to this protein allows one to follow the protein with an antibody against the Flag sequence.



1 μ g Flag fusion protein + Primary antibody dilution at

1、 1:5,000

2、 1:10,000

Application: WB-Western blot IHC-Immunochemistry IF-Immunofluorescence IP-Immunoprecipitation ChIP-Chormatin Immunoprecipitation

Reactivity: H-Human R-Rat M-Mouse Mk-Monkey Dg-Dog Ch-Chicken Hm-Hamster Rb-Rabbit Sh-Sheep Pg-Pig