

## GFP-Tag Rabbit Polyclonal Antibody(1G6)

|          |            |             |
|----------|------------|-------------|
| Catalog  | PMK109M    | PMK109S     |
| Quantity | 50 $\mu$ L | 100 $\mu$ L |

Tel :400-612-63/64  
 E-mail: bioprimacy@gmail.com  
 Web: www.biopmk.com

**For research use only.**

| Applications | Species Cross-Reactivity | Molecular Weight | Isotype |
|--------------|--------------------------|------------------|---------|
| WB、IP        | N/A                      | N/A              | IgG     |

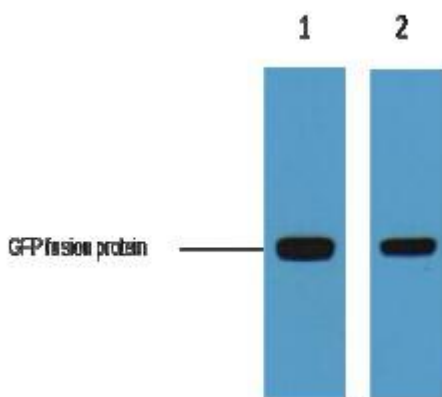
**Storage Buffer & Condition:** PBS, pH 7.4, containing 0.02% sodium azide as Preservative and 50% Glycerol. Store at -20°C. Do not aliquot the antibody.

**Recommended dilutions:** WB: 1:2000 IP: 1: 100

**Optimal dilutions should be determined by the end user.**

**Specificity:** The GFP tag antibody can recognize GFP and GFP tag fusion proteins

**Background:** The green fluorescent protein (GFP) is a protein composed of 238 amino acid residues (26.9kDa) that exhibits bright green fluorescence when exposed to light in the blue to ultraviolet range. In cell and molecular biology, the GFP gene is frequently used as a reporter of expression.



1 $\mu$ g GFP fusion protein+ Primary antibody dilution at

1 1:2,000

2 1:5,000

**Application:** WB-Western blot IHC-Immunochemistry IF-Immunofluorescence IP-Immunoprecipitation ChIP-Chormatin Immunoprecipitation

**Reactivity:** H-Human R-Rat M-Mouse Mk-Monkey Dg-Dog Ch-Chicken Hm-Hamster Rb-Rabbit Sh-Sheep Pg-Pig