



GAPDH Rabbit Polyclonal Antibody

Catalog PMK142M PMK142S

Tel : 400-457-3801

Quantity 50 μ L 100 μ L

E-mail: postmaster@biopmk.com

Web: www.biopmk.com

For research use only.

Applications	Species Cross-Reactivity	Molecular Weight	Isotype
WB, IHC	H, R, M, Mk, Ch, Hm, Sh, Pg, Xenopus	37KD	IgG

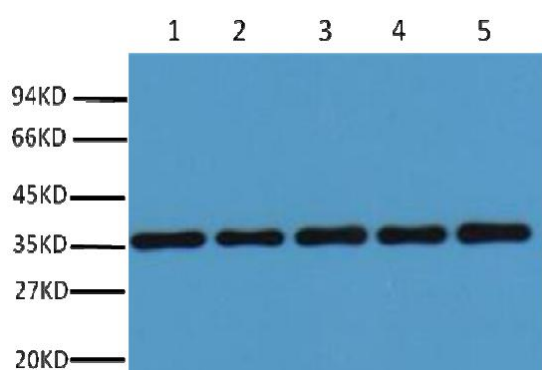
Storage Buffer & Condition: PBS, pH 7.4, containing 0.02% sodium azide as Preservative and 50% Glycerol.
Store at -20°C. Do not aliquot the antibody.

Recommended dilutions: WB: 1:5,000 IHC: 1:200

Optimal dilutions should be determined by the end user.

Specificity: Antibody can detects endogenous GAPDH protein.

Background: Glyceraldehyde 3 phosphate dehydrogenase (GAPDH) is well known as one of the key enzymes involved in glycolysis. GAPDH is constitutively expressed in almost all tissues at high levels, therefore antibodies against GAPDH are useful as loading controls for Western Blotting. Some physiological factors, such as hypoxia and diabetes, increase GAPDH expression in certain cell types.



Western blot analysis of 293T(1), Rat brain (2), NIH 3T3 (3), Sheep Muscle (4), Rabbit testis (5) with GAPDH rabbit pAb diluted at 1:20,000.

Application: WB-Western blot IHC-Immunochemistry IF-Immunofluorescence IP-Immunoprecipitation ChIP-Chormatin Immunoprecipitation

Reactivity: H-Human R-Rat M-Mouse Mk-Monkey Dg-Dog Ch-Chicken Hm-Hamster Rb-Rabbit Sh-Sheep Pg-Pig